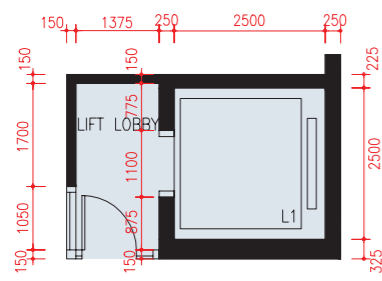
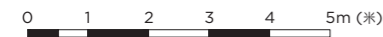


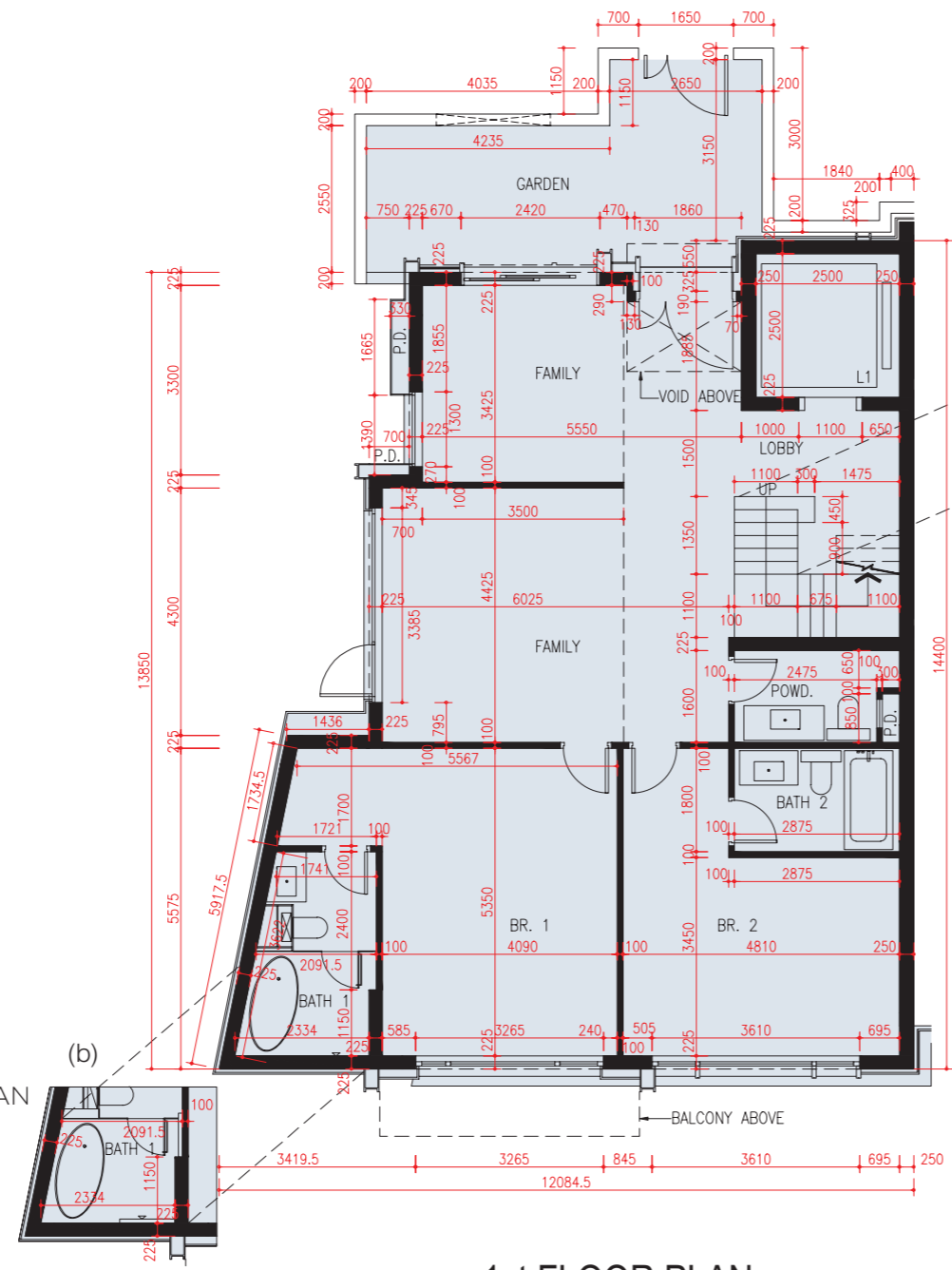
FLOOR PLANS OF RESIDENTIAL PROPERTIES IN THE DEVELOPMENT

發展項目的住宅物業的樓面平面圖

HOUSE 1 洋房 1

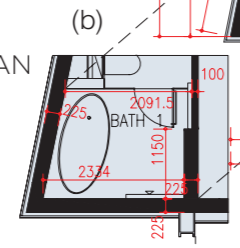


G/F CARPARK LOBBY PLAN
地下層停車場大堂平面圖

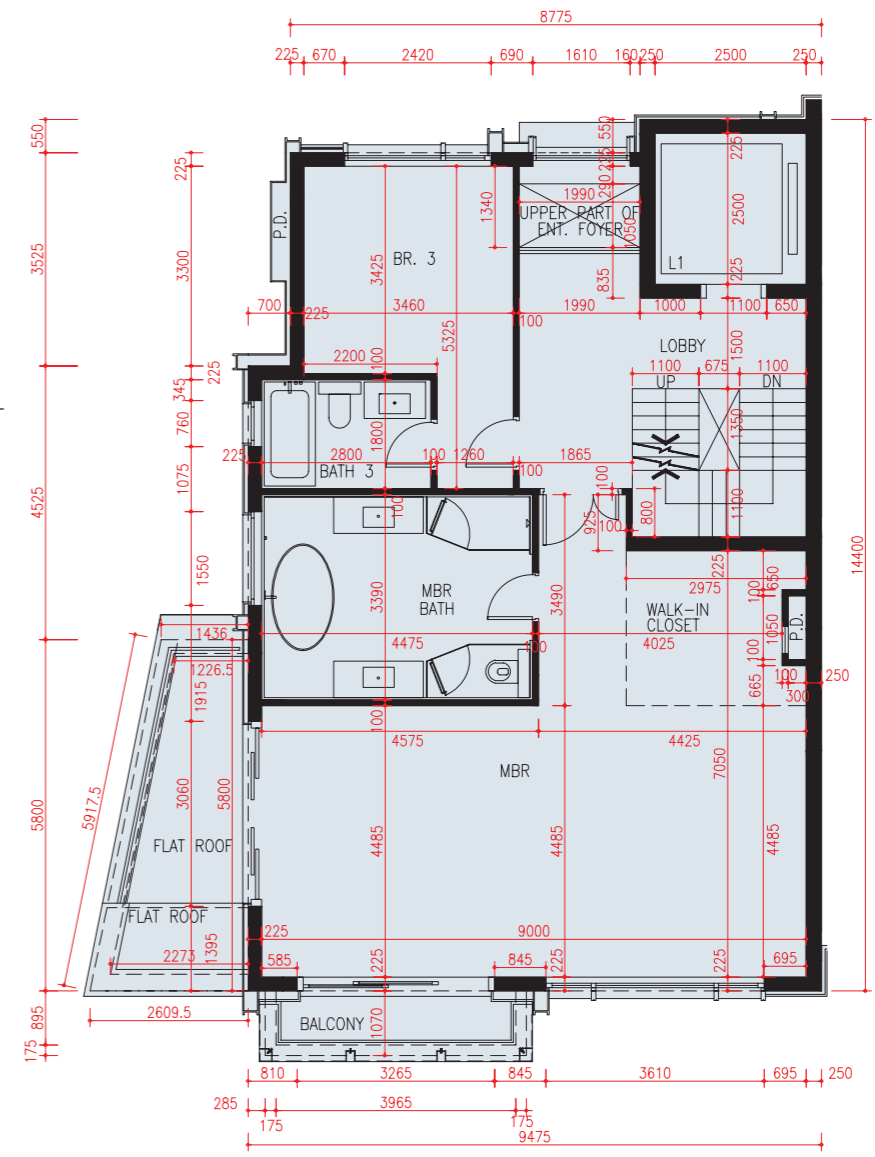


1st FLOOR PLAN
一樓平面圖

(a)
AS-BUILT PART
PLAN OF 1st
FLOOR OF
HOUSE 1
洋房一樓
實際建造局部
平面圖



(b)
AS-BUILT PART PLAN
OF 1st FLOOR OF
HOUSE 1
洋房一樓實際建造
局部平面圖



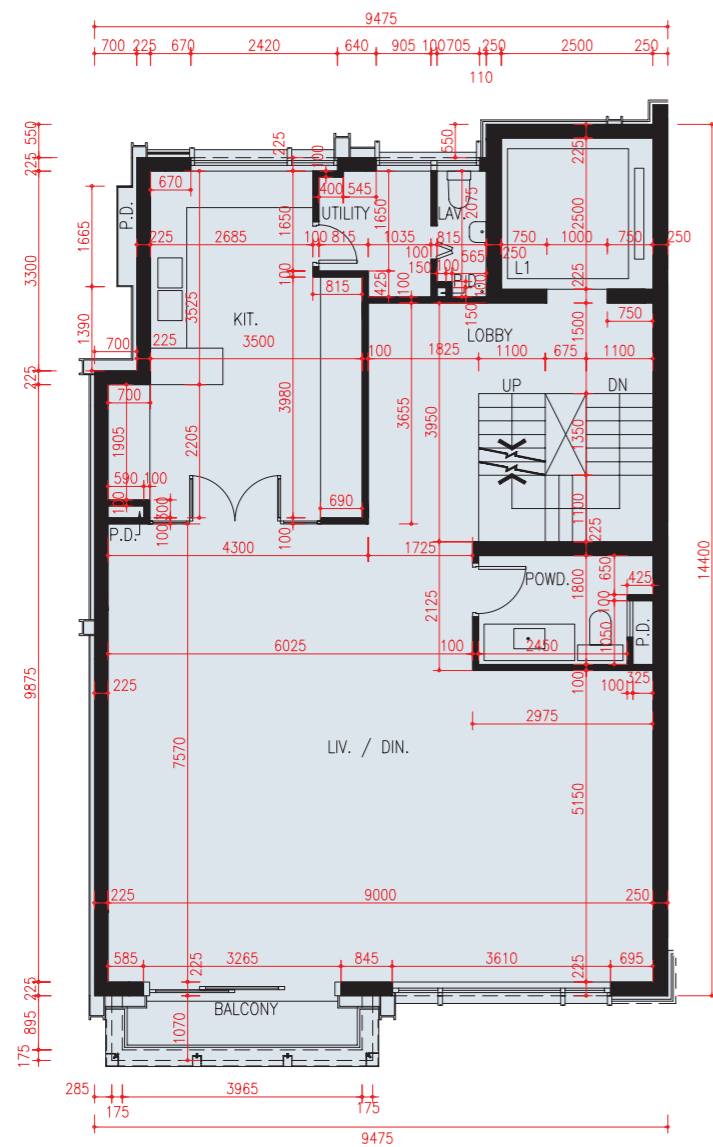
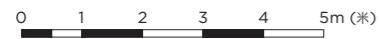
2nd FLOOR PLAN
二樓平面圖

These as-built part plans show the alteration works done to 1st Floor of HOUSE 1. Please refer to page 23 for details of the exempted works made to this house.
此洋房一樓實際建造局部平面圖顯示其已改動工程。有關此洋房獲豁免的工程改動之詳情，請參考第23頁。

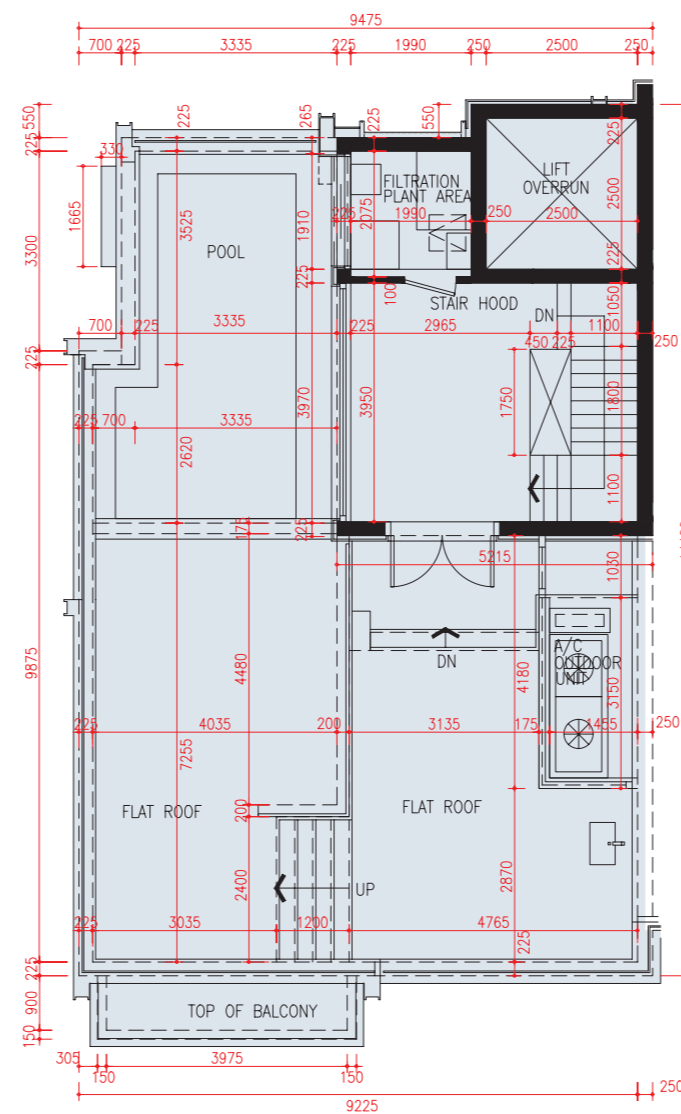
FLOOR PLANS OF RESIDENTIAL PROPERTIES IN THE DEVELOPMENT

發展項目的住宅物業的樓面平面圖

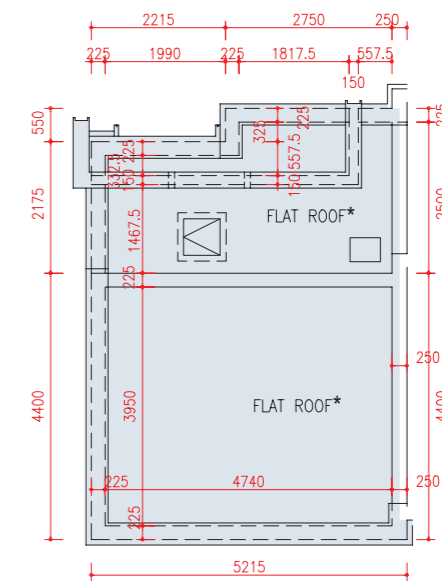
HOUSE 1 洋房 1



3rd FLOOR PLAN
三樓平面圖



ROOF FLOOR PLAN
天台平面圖



TOP ROOF PLAN
頂層天台平面圖

*The description of "Flat Roofs" as shown on the Top Roof Plan of House 1 of the Development corresponds to the description in the latest Approved Building Plans of the Development but each of such Flat Roofs is described as Roof in the Area Schedule.

*發展項目洋房1的頂層天台平面圖顯示為「平台」之描述，跟發展項目最新版本之批准的建築圖則上所描述的一致，惟每一個這樣的平台在面積表內描述為天台。

FLOOR PLANS OF RESIDENTIAL PROPERTIES IN THE DEVELOPMENT

發展項目的住宅物業的樓面平面圖

HOUSE 1 洋房 1		
Floor 樓層	The Thickness of floor slabs (excluding plaster) of each house (mm) 每座洋房的樓板 (不包括灰泥) 的厚度 (毫米)	The floor-to-floor height of each house (mm) 每座洋房的層與層之間的高度 (毫米)
G/F 地下	200	4575
1/F 一樓	150, 200, 225	2800, 2850, 3150, 3450, 3900, 6300
2/F 二樓	150, 200, 225	3150, 3450
3/F 三樓	150, 200, 275	3200, 3550, 3750, 3850, 3875, 4450
ROOF 天台	200	2775, 2925
TOP ROOF 頂層天台	N/A 不適用	N/A 不適用

Alterations to HOUSE 1 have been made by way of minor works or exempted works under the Buildings Ordinance (Cap. 123) after completion of the Development. The approximate locations of the alterations are indicated in the as-built part plans and the alterations are set out below (with the numbering below corresponding to the remarks in the as-built part plan):

- (a) Staircase step width revised.
- (b) New furring wall added.

Please refer to the as-built part plans on page 21.

洋房 1 在發展項目落成後因進行小型工程或獲《建築物條例》(第123章)豁免的工程而有所改動。該等改動之大概位置於實際建造局部平面圖標示，及該等改動列出如下(下述編號對應實際建造局部平面圖中的附註)：

- (a) 更改樓梯級闊度。
- (b) 新增墊牆。

請參考第21頁之實際建造局部平面圖。

Remarks:

1. The dimensions of floor plans are all structural dimensions in millimetre.
2. There may be architectural features and/or exposed pipes on external walls of some units and houses.
3. Common pipes exposed and/or enclosed in cladding are located at/adjacent to flat roof and/or external wall of some units and houses.
4. There are ceiling bulkheads and/or sunken slab at some units and houses at Living Room, Dining Room, Bedrooms, Bathrooms, Lavatory and/or Kitchen etc. of some units and houses for the air-conditioning system and/or Mechanical and Electrical services.
5. Floor-to-floor height refers to the height between the top surface of the structural slab of a floor and the top surface of the structural slab of its immediate upper floors.
6. The internal areas of the residential properties on the upper floors will generally be slightly larger than those on the lower floors because of the reducing thickness of the structural walls on the upper floors.
7. The ceiling height of some units may vary due to structural, architectural and/or decoration design variations.
8. The indications of fittings such as sinks, bathtubs, toilet bowls and wash basins, etc shown on the floors plans are indications of approximate locations only and not indications of their actual size, design or shapes.
9. Please refer to the reference of the legend shown on the floor plans on page 20 of this sales brochure.

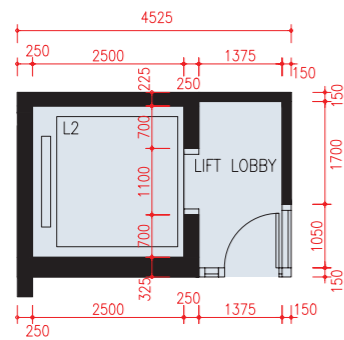
備註：

1. 平面圖所列之數字為以毫米標示之建築結構尺寸。
2. 部分單位及洋房外牆設有建築裝飾及/或外露喉管。
3. 部分單位及洋房的平台及/或外牆處/旁邊設有外露及/或隱藏外牆裝飾板內之公用喉管。
4. 部分單位及洋房客廳、飯廳、睡房、浴室、廁所及/或廚房等有假天花及/或有跌級樓板以內藏冷氣系統及/或機電設備。
5. 層與層之間的高度指該樓層之石屎地台面與上一層石屎地台面之高度距離。
6. 因住宅物業的較高樓層的結構牆的厚度遞減，較高樓層的內部面積，一般比較低樓層的內部面積稍大。
7. 部分單位之天花高度將會因應結構、建築設計及/或裝修設計上的需要有所差異。
8. 樓面平面圖所示之裝置如洗滌盤、浴缸、坐廁及洗面盆等只供展示其大約位置而非展示其實際大小、設計或形狀。
9. 請參閱本售樓說明書第20頁的平面圖上圖例的參考。

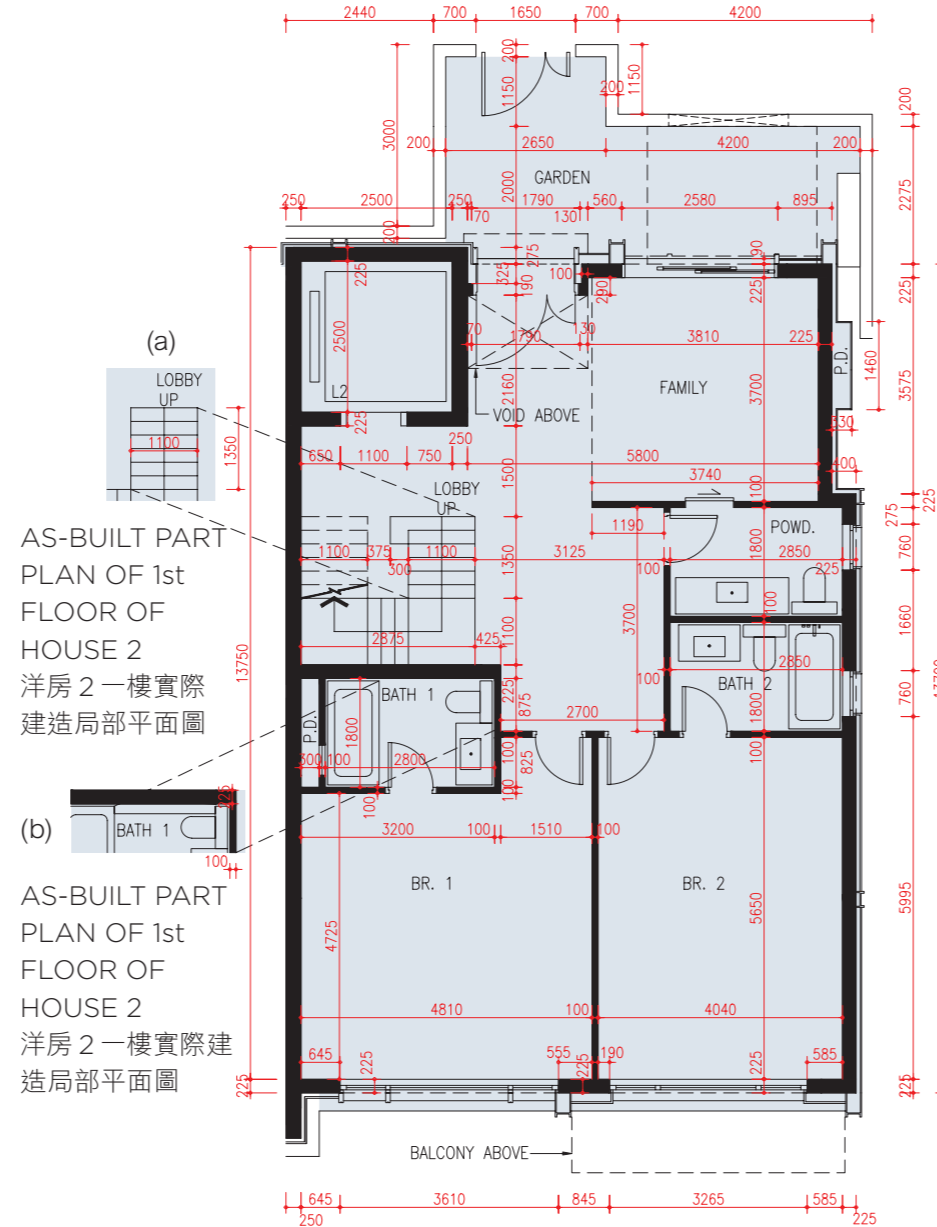
FLOOR PLANS OF RESIDENTIAL PROPERTIES IN THE DEVELOPMENT 發展項目的住宅物業的樓面平面圖

HOUSE 2 洋房 2

0 1 2 3 4 5m (米)



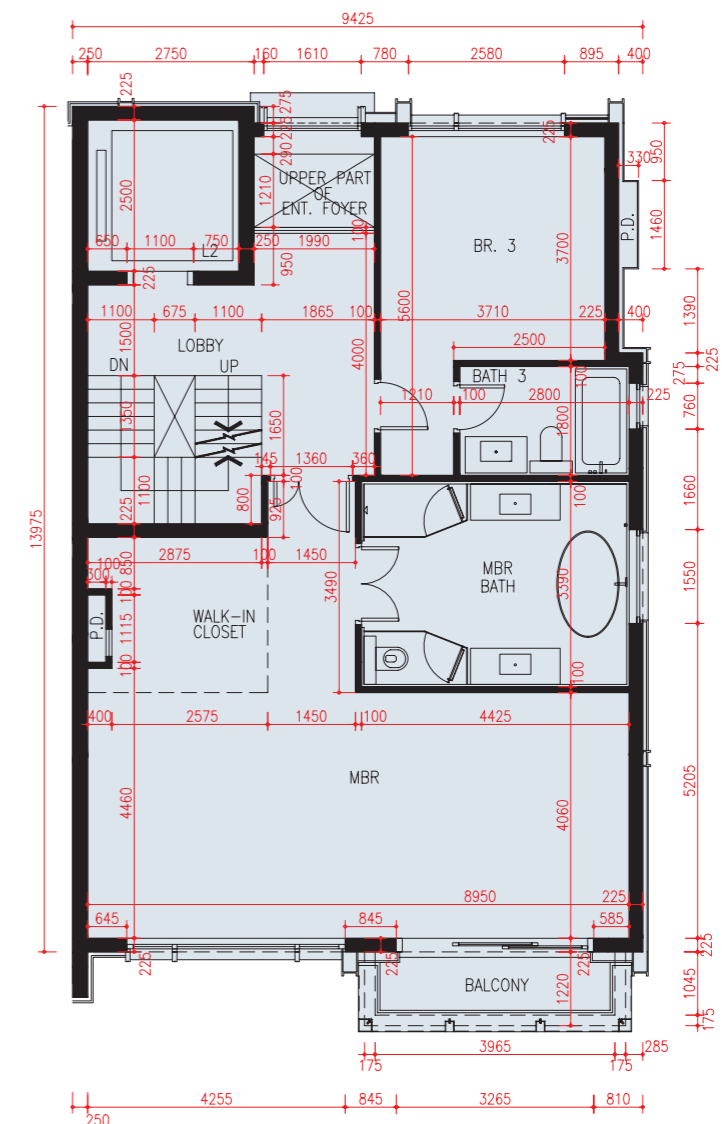
G/F CARPARK LOBBY PLAN
地下層停車場大堂平面圖



(a)
AS-BUILT PART
PLAN OF 1st
FLOOR OF
HOUSE 2
洋房 2 一樓實際
建造局部平面圖

(b)
AS-BUILT PART
PLAN OF 1st
FLOOR OF
HOUSE 2
洋房 2 一樓實際建
造局部平面圖

1st FLOOR PLAN
一樓平面圖



2nd FLOOR PLAN
二樓平面圖

These as-built part plans show the alteration works done to 1st Floor of HOUSE 2. Please refer to page 26 for details of the exempted works made to this house.

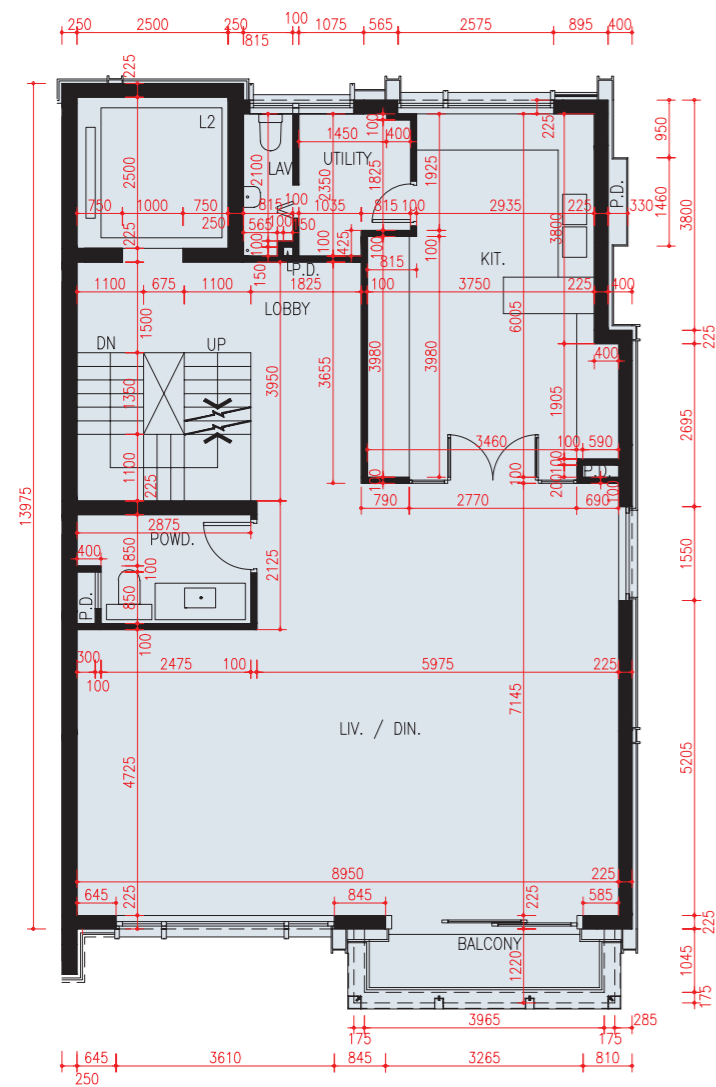
此洋房 2 一樓實際建造局部平面圖顯示其已改動工程。有關此洋房獲豁免的工程改動之詳情，請參考第 26 頁。



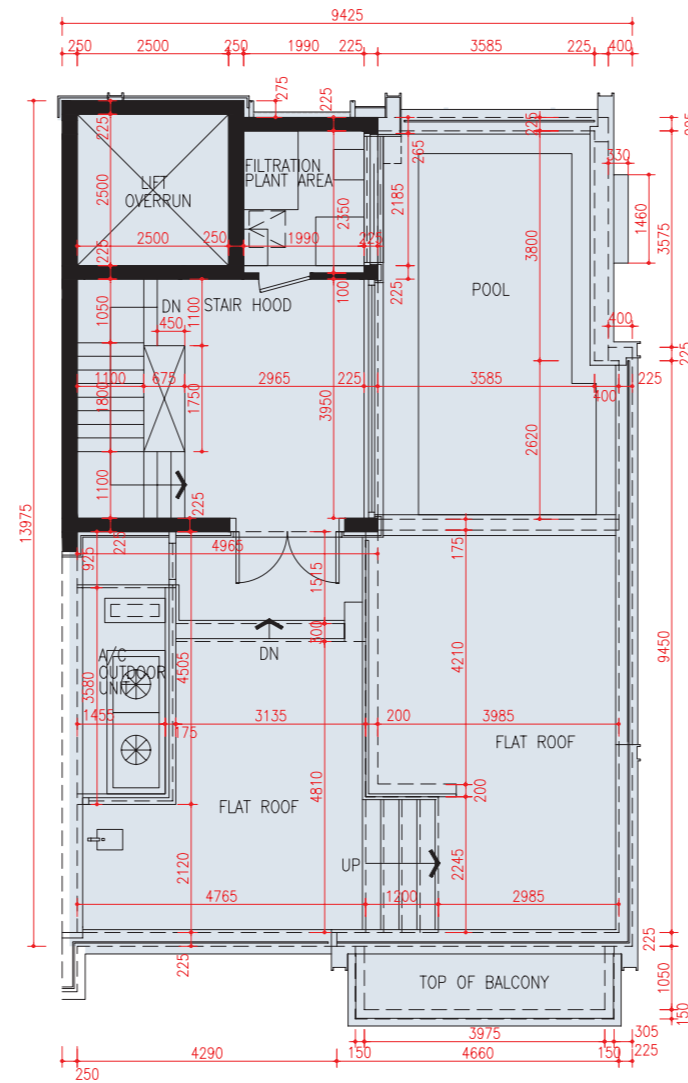
FLOOR PLANS OF RESIDENTIAL PROPERTIES IN THE DEVELOPMENT

發展項目的住宅物業的樓面平面圖

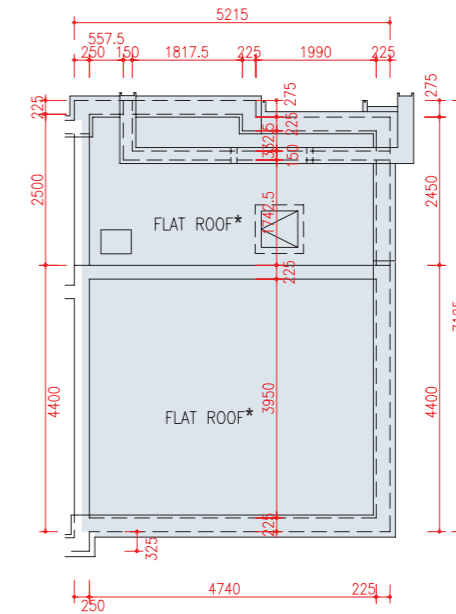
HOUSE 2 洋房 2



3rd FLOOR PLAN
三樓平面圖



ROOF FLOOR PLAN
天台平面圖



TOP ROOF PLAN
頂層天台平面圖

*The description of "Flat Roofs" as shown on the Top Roof Plan of House 2 of the Development corresponds to the description in the latest Approved Building Plans of the Development but each of such Flat Roofs is described as Roof in the Area Schedule.

*發展項目洋房2的頂層天台平面圖顯示為「平台」之描述，跟發展項目最新版本之批准的建築圖則上所描述的一致，惟每一個這樣的平台在面積表內描述為天台。

FLOOR PLANS OF RESIDENTIAL PROPERTIES IN THE DEVELOPMENT

發展項目的住宅物業的樓面平面圖

HOUSE 2 洋房 2		
Floor 樓層	The Thickness of floor slabs (excluding plaster) of each house (mm) 每座洋房的樓板 (不包括灰泥) 的厚度 (毫米)	The floor-to-floor height of each house (mm) 每座洋房的層與層之間的高度 (毫米)
G/F 地下	200	4575
1/F 一樓	150, 200, 225	2800, 2850, 3150, 3450, 6300
2/F 二樓	150, 200, 225	3150, 3450
3/F 三樓	150, 200, 275	3200, 3550, 3750, 3850, 3875, 4450
ROOF 天台	200	2775, 2925
TOP ROOF 頂層天台	N/A 不適用	N/A 不適用

Alterations to HOUSE 2 have been made by way of minor works or exempted works under the Buildings Ordinance (Cap. 123) after completion of the Development. The approximate locations of the alterations are indicated in the as-built part plans and the alterations are set out below (with the numbering below corresponding to the remarks in the as-built part plan):

- (a) Staircase step width revised.
- (b) New furring at low level added.

Please refer to the as-built part plans on page 24.

洋房 2 在發展項目落成後因進行小型工程或獲《建築物條例》(第123章)豁免的工程而有所改動。該等改動之大概位置於實際建造局部平面圖標示，及該等改動列出如下(下述編號對應實際建造局部平面圖中的附註)：

- (a) 更改樓梯級闊度。
- (b) 新增低位墊牆。

請參考第24頁之實際建造局部平面圖。

Remarks:

1. The dimensions of floor plans are all structural dimensions in millimetre.
2. There may be architectural features and/or exposed pipes on external walls of some units and houses.
3. Common pipes exposed and/or enclosed in cladding are located at/adjacent to flat roof and/or external wall of some units and houses.
4. There are ceiling bulkheads and/or sunken slab at some units and houses at Living Room, Dining Room, Bedrooms, Bathrooms, Lavatory and/or Kitchen etc. of some units and houses for the air-conditioning system and/or Mechanical and Electrical services.
5. Floor-to-floor height refers to the height between the top surface of the structural slab of a floor and the top surface of the structural slab of its immediate upper floors.
6. The internal areas of the residential properties on the upper floors will generally be slightly larger than those on the lower floors because of the reducing thickness of the structural walls on the upper floors.
7. The ceiling height of some units may vary due to structural, architectural and/or decoration design variations.
8. The indications of fittings such as sinks, bathtubs, toilet bowls and wash basins, etc shown on the floors plans are indications of approximate locations only and not indications of their actual size, design or shapes.
9. Please refer to the reference of the legend shown on the floor plans on page 20 of this sales brochure.

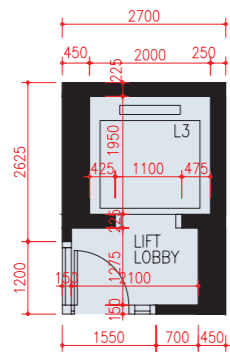
備註：

1. 平面圖所列之數字為以毫米標示之建築結構尺寸。
2. 部分單位及洋房外牆設有建築裝飾及/或外露喉管。
3. 部分單位及洋房的平台及/或外牆處/旁邊設有外露及/或隱藏外牆裝飾板內之公用喉管。
4. 部分單位及洋房客廳、飯廳、睡房、浴室、廁所及/或廚房等有假天花及/或有跌級樓板以內藏冷氣系統及/或機電設備。
5. 層與層之間的高度指該樓層之石屎地台面與上一層石屎地台面之高度距離。
6. 因住宅物業的較高樓層的結構牆的厚度遞減，較高樓層的內部面積，一般比較低樓層的內部面積稍大。
7. 部分單位之天花高度將會因應結構、建築設計及/或裝修設計上的需要有差異。
8. 樓面平面圖所示之裝置如洗滌盤、浴缸、坐廁及洗面盆等只供展示其大約位置而非展示其實際大小、設計或形狀。
9. 請參閱本售樓說明書第20頁的平面圖上圖例的參考。

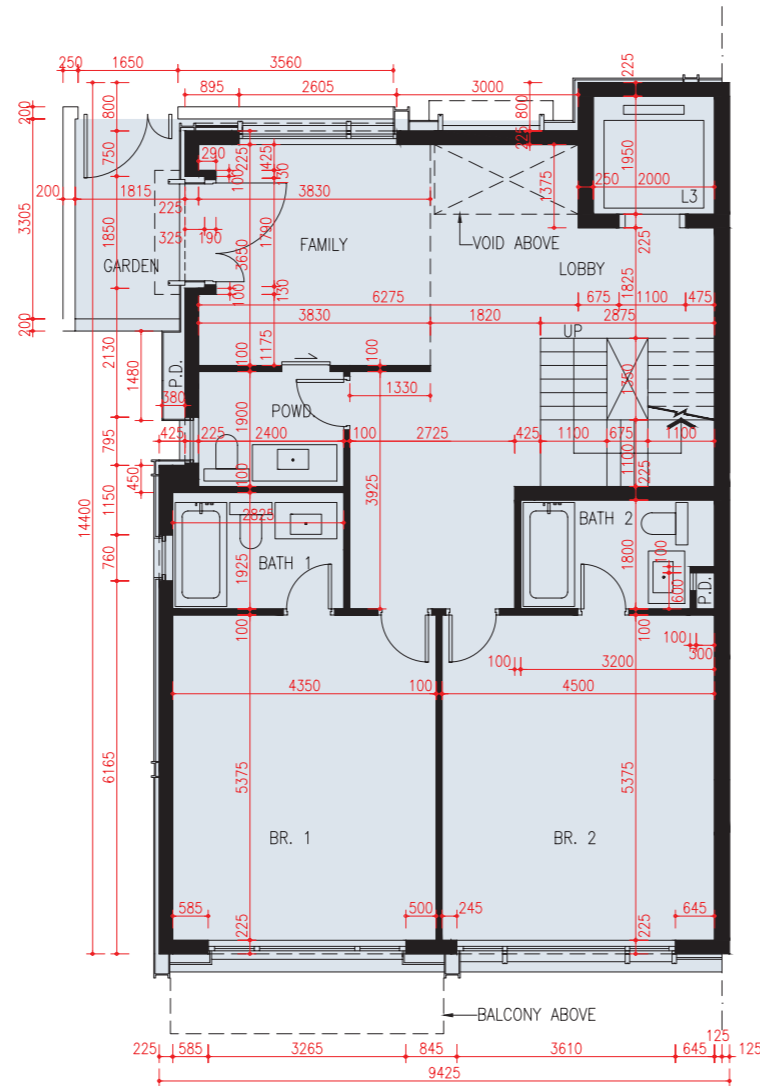
FLOOR PLANS OF RESIDENTIAL PROPERTIES IN THE DEVELOPMENT

發展項目的住宅物業的樓面平面圖

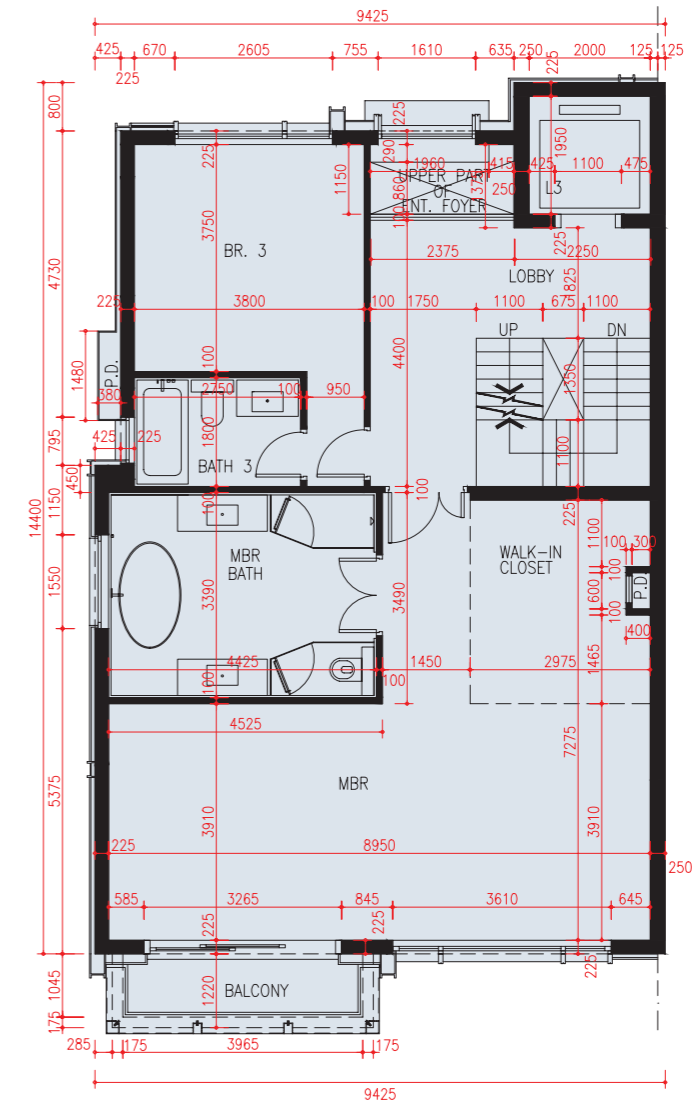
HOUSE 3 洋房 3



G/F CARPARK LOBBY PLAN
地下層停車場大堂平面圖



1st FLOOR PLAN
一樓平面圖

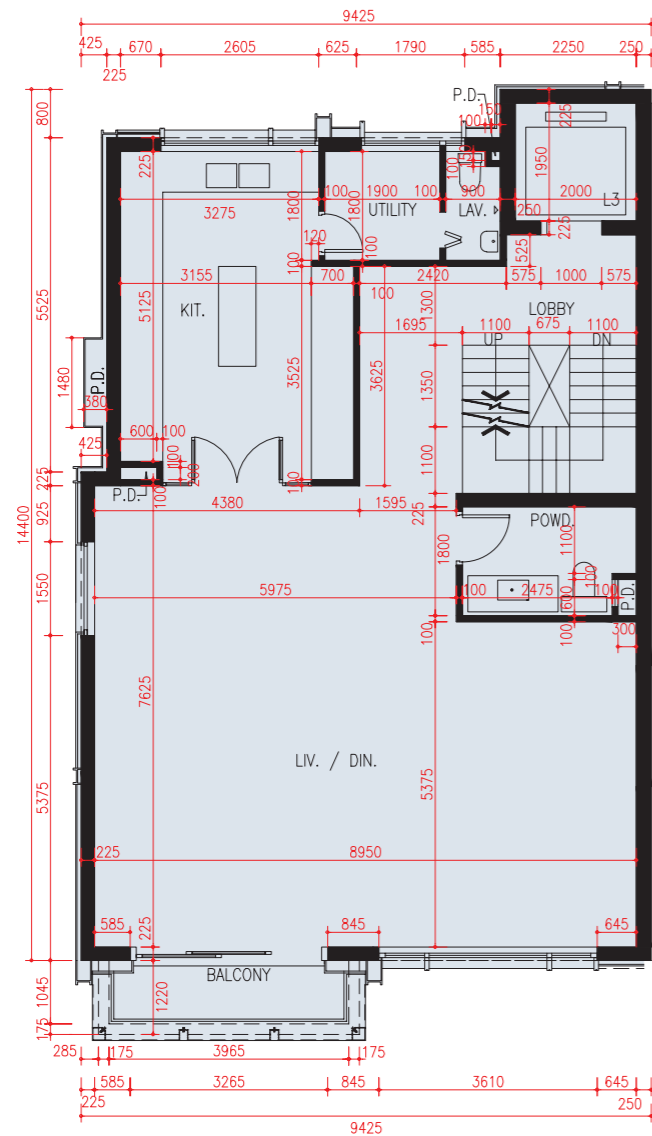


2nd FLOOR PLAN
二樓平面圖

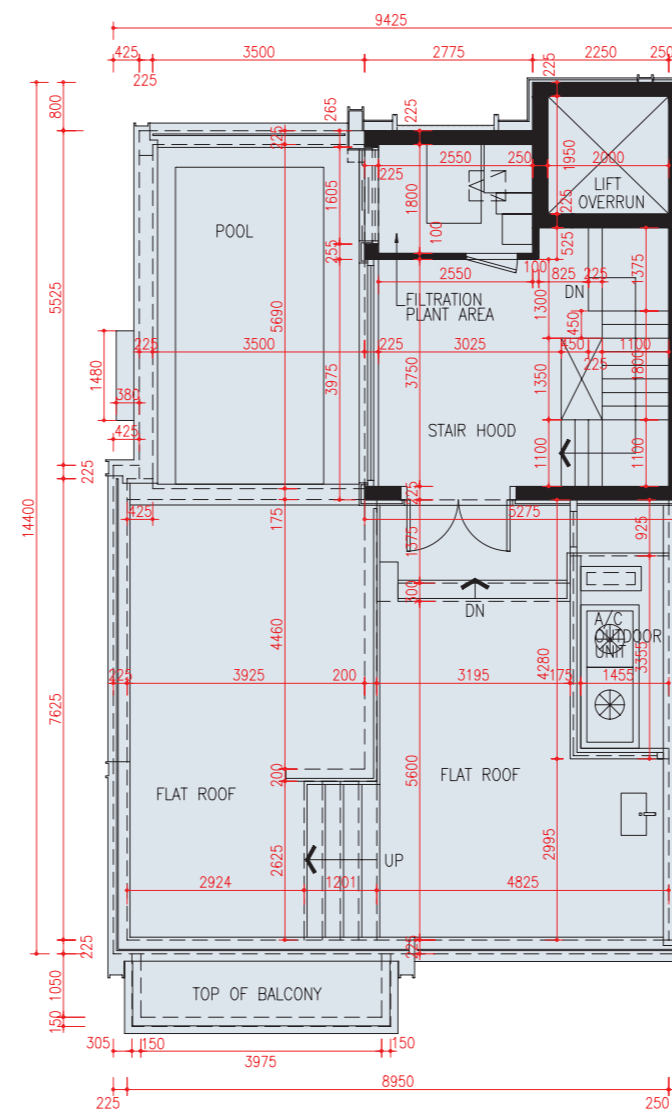
FLOOR PLANS OF RESIDENTIAL PROPERTIES IN THE DEVELOPMENT

發展項目的住宅物業的樓面平面圖

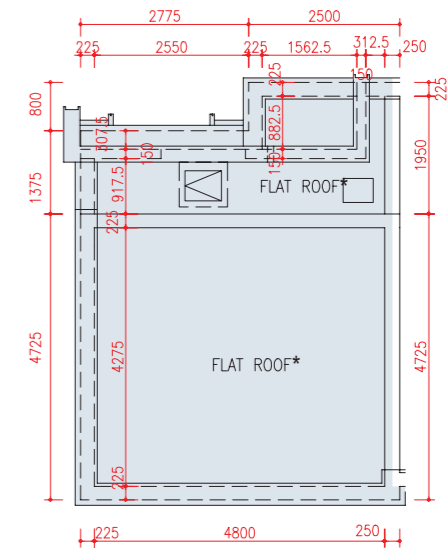
HOUSE 3 洋房 3



3rd FLOOR PLAN
三樓平面圖



ROOF FLOOR PLAN
天台平面圖



TOP ROOF PLAN
頂層天台平面圖

*The description of "Flat Roofs" as shown on the Top Roof Plan of House 3 of the Development corresponds to the description in the latest Approved Building Plans of the Development but each of such Flat Roofs is described as Roof in the Area Schedule.

*發展項目洋房3的頂層天台平面圖顯示為「平台」之描述，跟發展項目最新版本之批准的建築圖則上所描述的一致，惟每一個這樣的平台在面積表內描述為天台。

FLOOR PLANS OF RESIDENTIAL PROPERTIES IN THE DEVELOPMENT

發展項目的住宅物業的樓面平面圖

HOUSE 3 洋房 3		
Floor 樓層	The Thickness of floor slabs (excluding plaster) of each house (mm) 每座洋房的樓板 (不包括灰泥) 的厚度 (毫米)	The floor-to-floor height of each house (mm) 每座洋房的層與層之間的高度 (毫米)
G/F 地下	200	4575
1/F 一樓	150, 200, 225	2800, 3150, 3220, 3520, 6300
2/F 二樓	150, 200, 225	3150, 3450
3/F 三樓	150, 200, 275	3200, 3550, 3750, 3850, 3875, 4450
ROOF 天台	200	2775, 2925, 3425
TOP ROOF 頂層天台	N/A 不適用	N/A 不適用

Remarks:

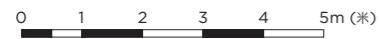
- The dimensions of floor plans are all structural dimensions in millimetre.
- There may be architectural features and/or exposed pipes on external walls of some units and houses.
- Common pipes exposed and/or enclosed in cladding are located at/adjacent to flat roof and/or external wall of some units and houses.
- There are ceiling bulkheads and/or sunken slab at some units and houses at Living Room, Dining Room, Bedrooms, Bathrooms, Lavatory and/or Kitchen etc. of some units and houses for the air-conditioning system and/or Mechanical and Electrical services.
- Floor-to-floor height refers to the height between the top surface of the structural slab of a floor and the top surface of the structural slab of its immediate upper floors.
- The internal areas of the residential properties on the upper floors will generally be slightly larger than those on the lower floors because of the reducing thickness of the structural walls on the upper floors.
- The ceiling height of some units may vary due to structural, architectural and/or decoration design variations.
- The indications of fittings such as sinks, bathtubs, toilet bowls and wash basins, etc shown on the floors plans are indications of approximate locations only and not indications of their actual size, design or shapes.
- Please refer to the reference of the legend shown on the floor plans on page 20 of this sales brochure.

備註：

- 平面圖所列之數字為以毫米標示之建築結構尺寸。
- 部分單位及洋房外牆設有建築裝飾及/或外露喉管。
- 部分單位及洋房的平台及/或外牆處/旁邊設有外露及/或隱藏外牆裝飾板內之公用喉管。
- 部分單位及洋房客廳、飯廳、睡房、浴室、廁所及/或廚房等有假天花及/或有跌級樓板以內藏冷氣系統及/或機電設備。
- 層與層之間的高度指該樓層之石屎地台面與上一層石屎地台面之高度距離。
- 因住宅物業的較高樓層的結構牆的厚度遞減，較高樓層的內部面積，一般比較低樓層的內部面積稍大。
- 部分單位之天花高度將會因應結構、建築設計及/或裝修設計上的需要有差異。
- 樓面平面圖所示之裝置如洗滌盤、浴缸、坐廁及洗面盆等只供展示其大約位置而非展示其實際大小、設計或形狀。
- 請參閱本售樓說明書第20頁的平面圖上圖例的參考。

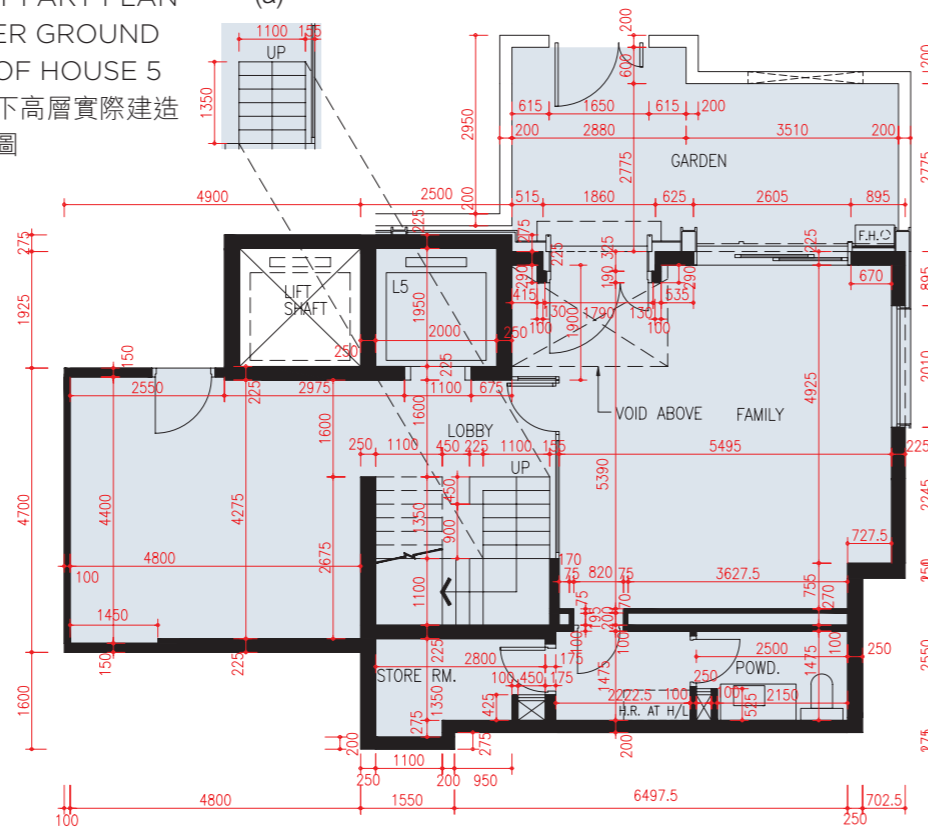
FLOOR PLANS OF RESIDENTIAL PROPERTIES IN THE DEVELOPMENT 發展項目的住宅物業的樓面平面圖

HOUSE 5 洋房 5



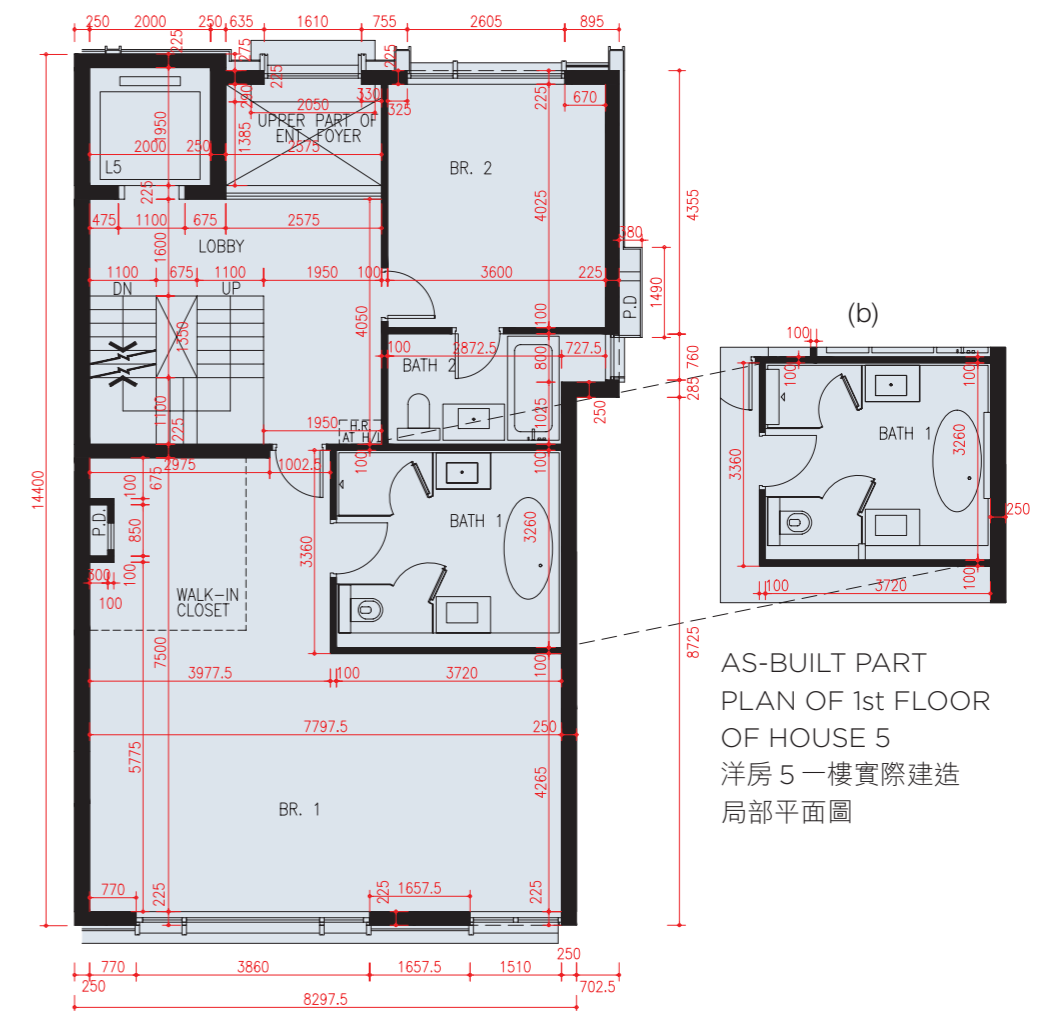
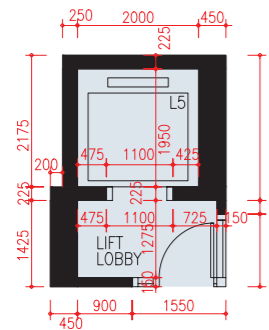
AS-BUILT PART PLAN
OF UPPER GROUND
FLOOR OF HOUSE 5
洋房 5 地下高層實際建造
局部平面圖

(a)



UPPER GROUND FLOOR PLAN
地下高層平面圖

G/F CARPARK LOBBY PLAN
地下層停車場大堂平面圖



(b)

AS-BUILT PART
PLAN OF 1st FLOOR
OF HOUSE 5
洋房 5 一樓實際建造
局部平面圖

1st FLOOR PLAN
一樓平面圖

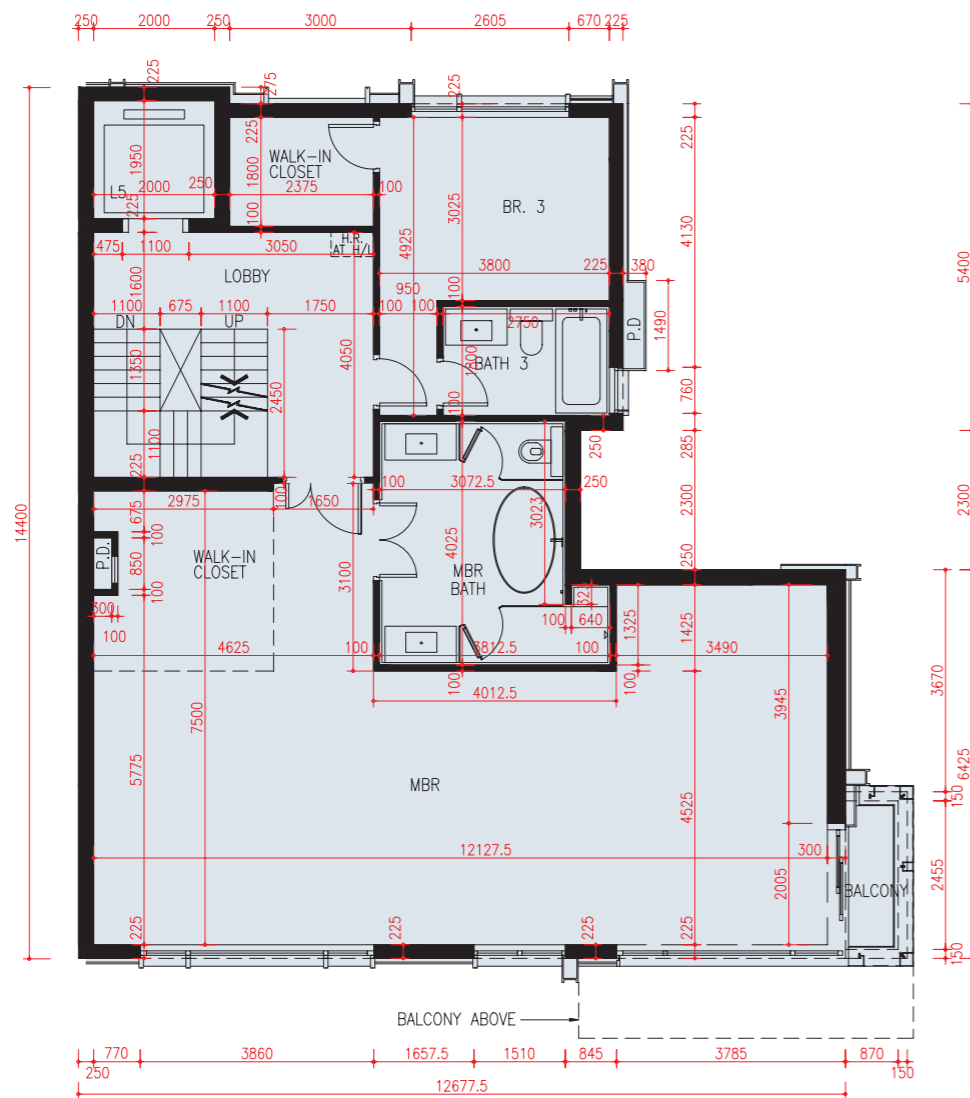
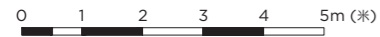
These as-built part plans show the alteration works done to Upper Ground Floor and 1st Floor of HOUSE 5. Please refer to page 33 for details of the exempted works made to this house.

此洋房 5 地下高層及一樓實際建造局部平面圖顯示其已改動工程。有關此洋房獲豁免的工程改動之詳情，請參考第 33 頁。

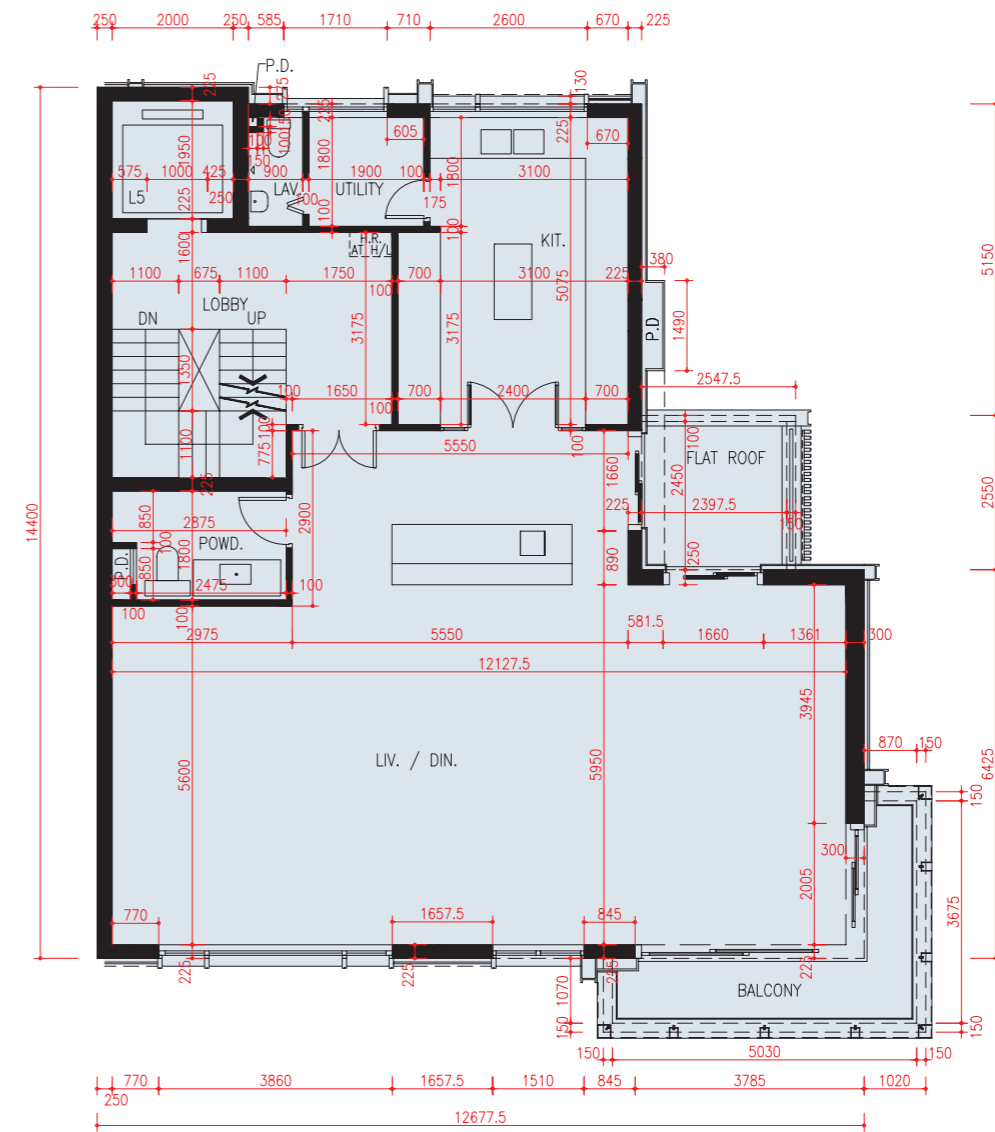
FLOOR PLANS OF RESIDENTIAL PROPERTIES IN THE DEVELOPMENT

發展項目的住宅物業的樓面平面圖

HOUSE 5 洋房 5



2nd FLOOR PLAN
二樓平面圖

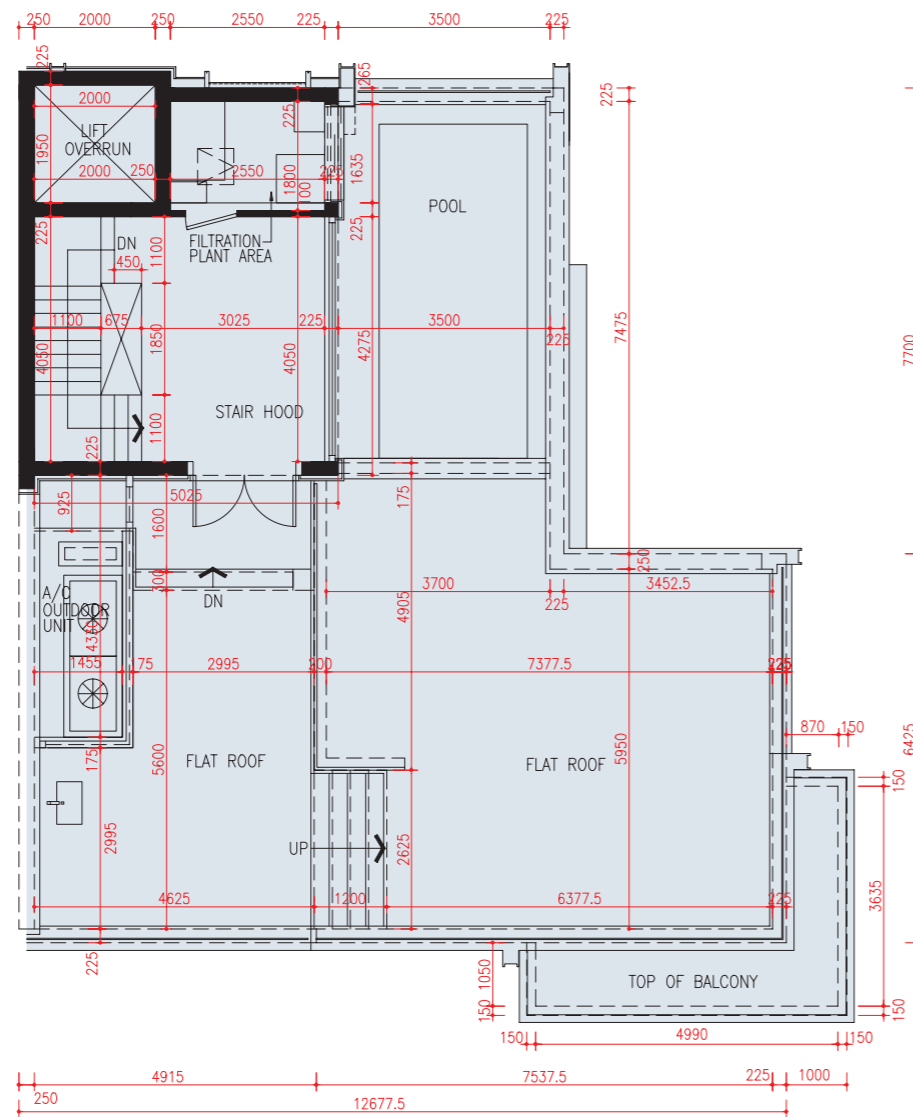


3rd FLOOR PLAN
三樓樓面平面圖

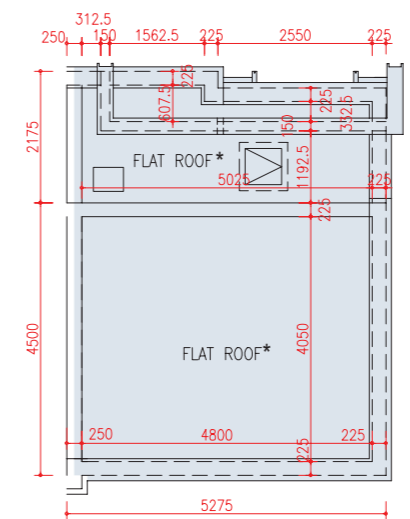
FLOOR PLANS OF RESIDENTIAL PROPERTIES IN THE DEVELOPMENT

發展項目的住宅物業的樓面平面圖

HOUSE 5 洋房 5



ROOF FLOOR PLAN
天台平面圖



TOP ROOF PLAN
頂層天台平面圖

*The description of "Flat Roofs" as shown on the Top Roof Plan of House 5 of the Development corresponds to the description in the latest Approved Building Plans of the Development but each of such Flat Roofs is described as Roof in the Area Schedule.

*發展項目洋房5的頂層天台平面圖顯示為「平台」之描述，跟發展項目最新版本之批准的建築圖則上所描述的一致，惟每一個這樣的平台在面積表內描述為天台。

FLOOR PLANS OF RESIDENTIAL PROPERTIES IN THE DEVELOPMENT

發展項目的住宅物業的樓面平面圖

HOUSE 5 洋房 5		
Floor 樓層	The Thickness of floor slabs (excluding plaster) of each house (mm) 每座洋房的樓板(不包括灰泥)的厚度(毫米)	The floor-to-floor height of each house (mm) 每座洋房的層與層之間的高度(毫米)
G/F 地下	200	4575
UG/F 地下高層	150, 200, 225	2700, 2750, 3000, 6150
1/F 一樓	150, 200, 225	2850, 3150, 3450, 3500
2/F 二樓	150, 200, 225	3150, 3450
3/F 三樓	150, 200, 275	3200, 3550, 3750, 3850, 3875, 4450
ROOF 天台	200	2775, 2925
TOP ROOF 頂層天台	N/A 不適用	N/A 不適用

Alterations to HOUSE 5 have been made by way of minor works or exempted works under the Buildings Ordinance (Cap. 123) after completion of the Development. The approximate locations of the alterations are indicated in the as-built part plans and the alterations are set out below (with the numbering below corresponding to the remarks in the as-built part plan):

(a) Revision of staircase step width.

(b) New furring wall added.

Please refer to the as-built part plans on page 30.

洋房5在發展項目落成後因進行小型工程或獲《建築物條例》(第123章)豁免的工程而有所改動。該等改動之大概位置於實際建造局部平面圖標示, 及該等改動列出如下(下述編號對應實際建造局部平面圖中的附註):

(a) 更改樓梯級闊度。

(b) 新增墊牆。

請參考第30頁之實際建造局部平面圖。

Remarks:

1. The dimensions of floor plans are all structural dimensions in millimetre.
2. There may be architectural features and/or exposed pipes on external walls of some units and houses.
3. Common pipes exposed and/or enclosed in cladding are located at/adjacent to flat roof and/or external wall of some units and houses.
4. There are ceiling bulkheads and/or sunken slab at some units and houses at Living Room, Dining Room, Bedrooms, Bathrooms, Lavatory and/or Kitchen etc. of some units and houses for the air-conditioning system and/or Mechanical and Electrical services.
5. Floor-to-floor height refers to the height between the top surface of the structural slab of a floor and the top surface of the structural slab of its immediate upper floors.
6. The internal areas of the residential properties on the upper floors will generally be slightly larger than those on the lower floors because of the reducing thickness of the structural walls on the upper floors.
7. The ceiling height of some units may vary due to structural, architectural and/or decoration design variations.
8. The indications of fittings such as sinks, bathtubs, toilet bowls and wash basins, etc shown on the floors plans are indications of approximate locations only and not indications of their actual size, design or shapes.
9. Please refer to the reference of the legend shown on the floor plans on page 20 of this sales brochure.

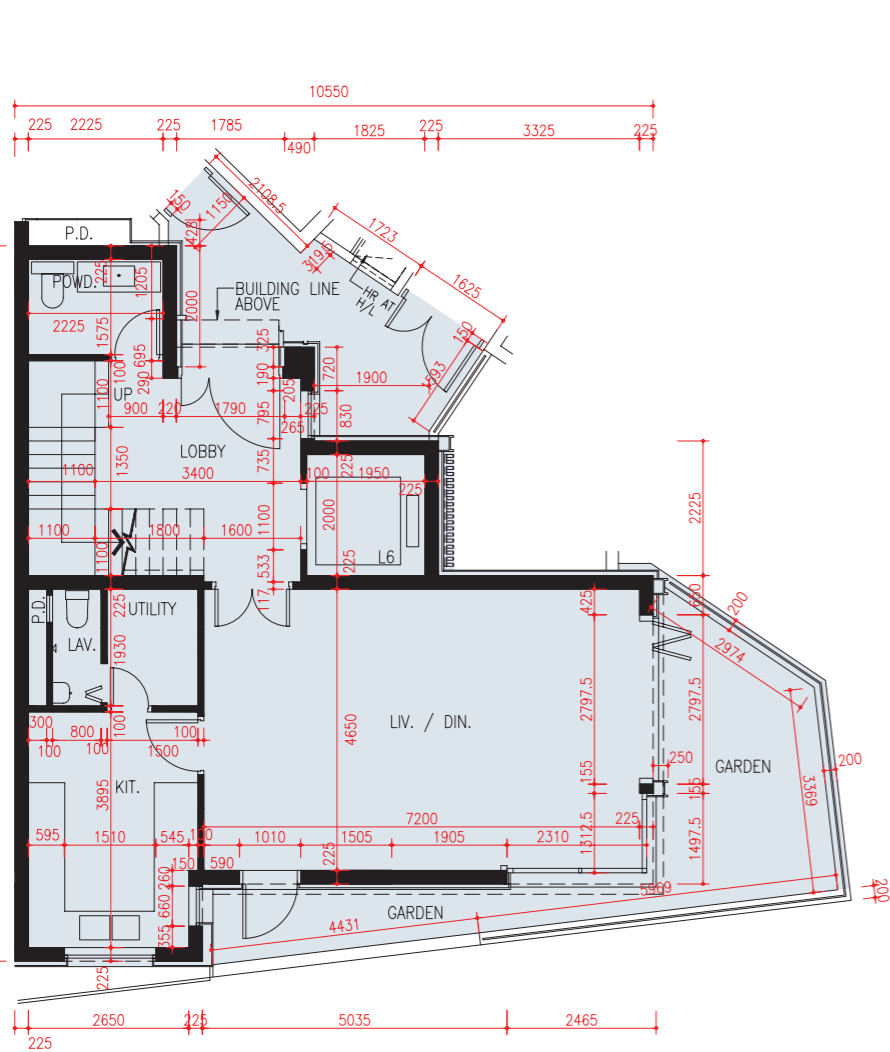
備註:

1. 平面圖所列之數字為以毫米標示之建築結構尺寸。
2. 部分單位及洋房外牆設有建築裝飾及/或外露喉管。
3. 部分單位及洋房的平台及/或外牆處/旁邊設有外露及/或隱藏外牆裝飾板內之公用喉管。
4. 部分單位及洋房客廳、飯廳、睡房、浴室、廁所及/或廚房等有假天花及/或有跌級樓板以內藏冷氣系統及/或機電設備。
5. 層與層之間的高度指該樓層之石屎地台面與上一層石屎地台面之高度距離。
6. 因住宅物業的較高樓層的結構牆的厚度遞減, 較高樓層的內部面積, 一般比較低樓層的內部面積稍大。
7. 部分單位之天花高度將會因應結構、建築設計及/或裝修設計上的需要有差異。
8. 樓面平面圖所示之裝置如洗滌盤、浴缸、坐廁及洗面盆等只供展示其大約位置而非展示其實際大小、設計或形狀。
9. 請參閱本售樓說明書第20頁的平面圖上圖例的參考。

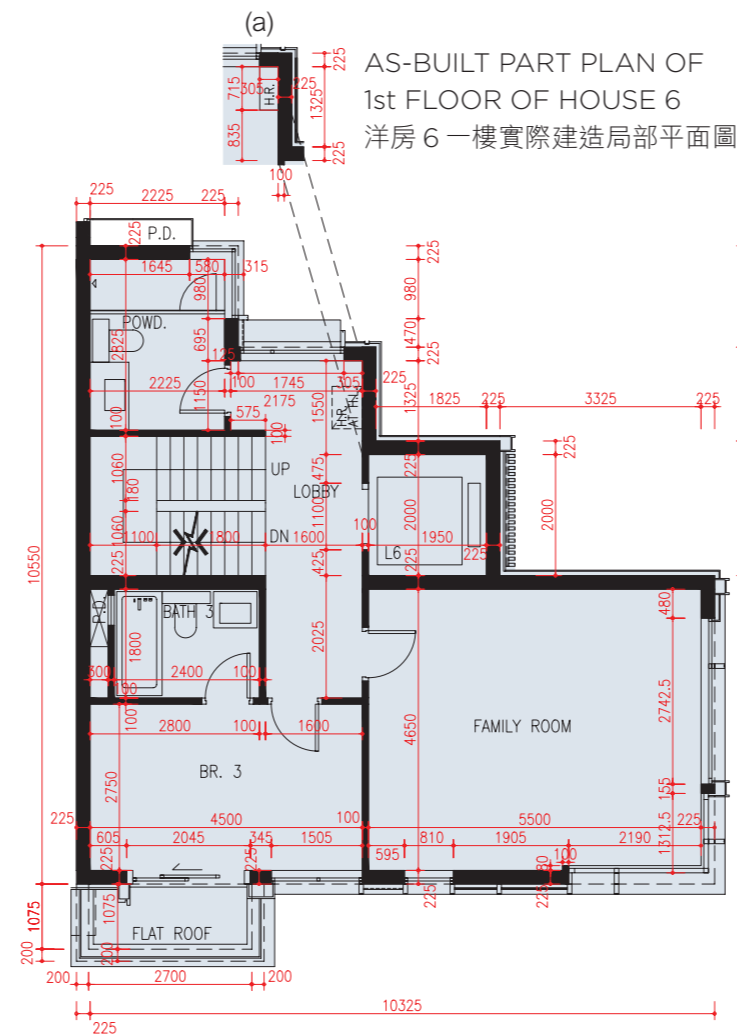
FLOOR PLANS OF RESIDENTIAL PROPERTIES IN THE DEVELOPMENT

發展項目的住宅物業的樓面平面圖

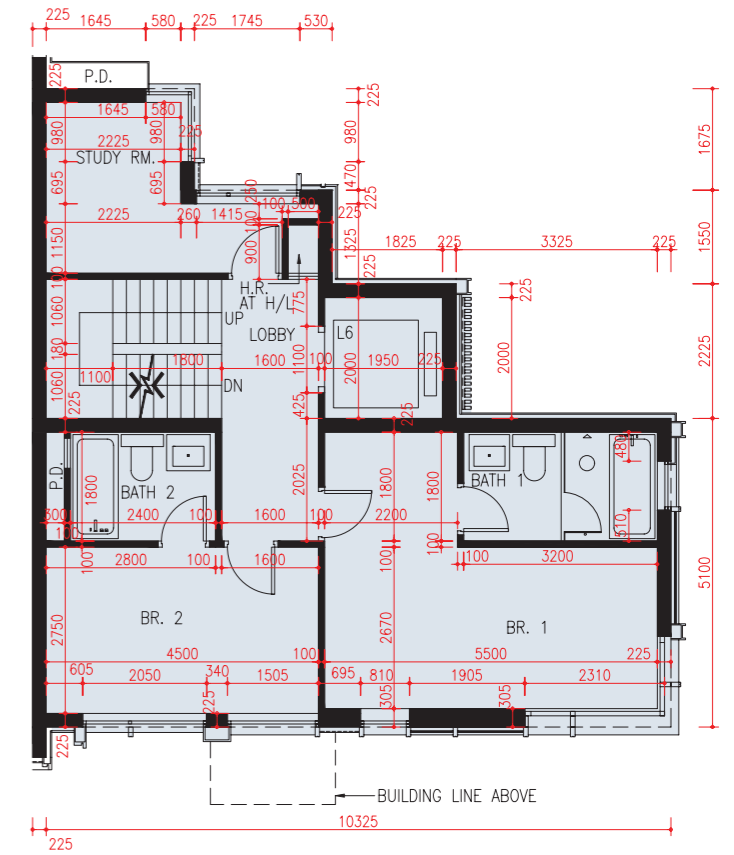
HOUSE 6 洋房 6



GROUND FLOOR PLAN
地下層平面圖



1st FLOOR PLAN
一樓平面圖



2nd FLOOR PLAN
二樓平面圖

This as-built part plan show the alteration work done to 1st Floor of HOUSE 6. Please refer to page 36 for details of the exempted works made to this house.

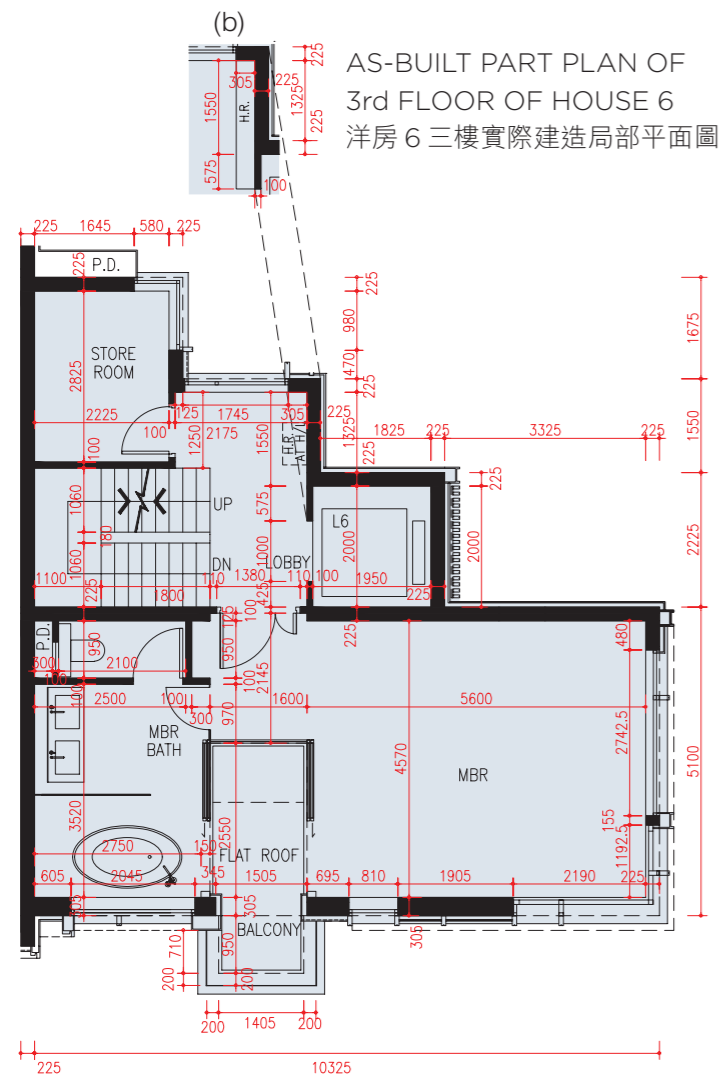
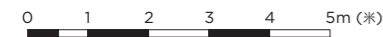
此洋房6一樓實際建造局部平面圖顯示其已改動工程。有關此洋房獲豁免的工程改動之詳情，請參考第36頁。



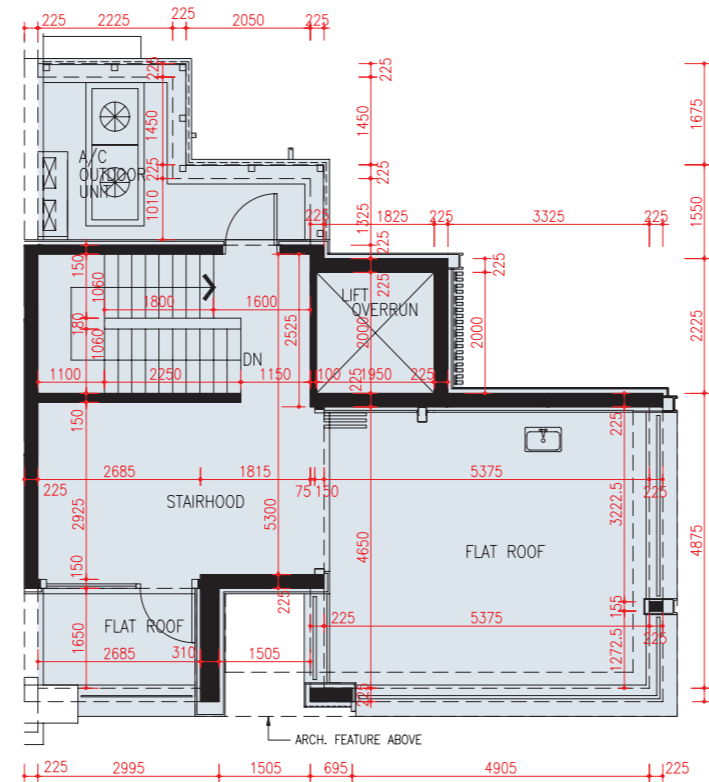
FLOOR PLANS OF RESIDENTIAL PROPERTIES IN THE DEVELOPMENT

發展項目的住宅物業的樓面平面圖

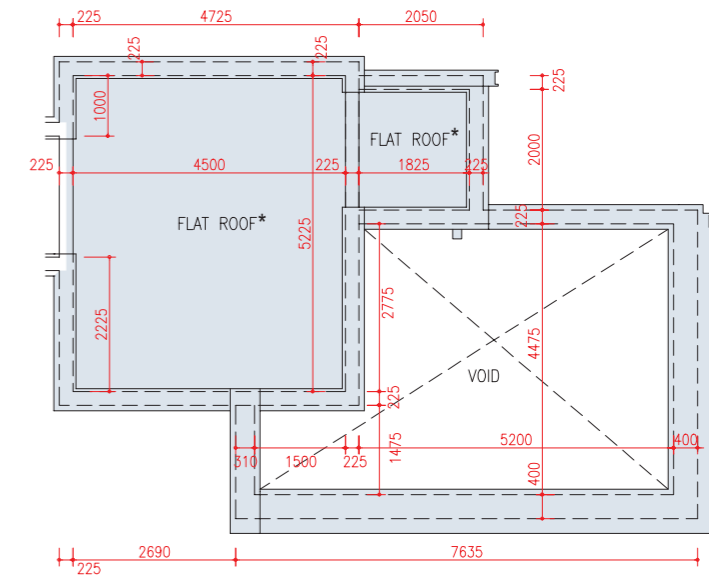
HOUSE 6 洋房 6



3rd FLOOR PLAN
三樓樓面平面圖



ROOF FLOOR PLAN
天台平面圖



TOP ROOF PLAN
頂層天台平面圖

This as-built part plan show the alteration work done to 3rd Floor of HOUSE 6. Please refer to page 36 for details of the exempted works made to this house.

此洋房 6 三樓實際建造局部平面圖顯示其已改動工程。有關此洋房獲豁免的工程改動之詳情，請參考第 36 頁。

*The description of "Flat Roofs" as shown on the Top Roof Plan of House 6 of the Development corresponds to the description in the latest Approved Building Plans of the Development but each of such Flat Roofs is described as Roof in the Area Schedule.

*發展項目洋房 6 的頂層天台平面圖顯示為「平台」之描述，跟發展項目最新版本之批准的建築圖則上所描述的一致，惟每一個這樣的平台在面積表內描述為天台。

FLOOR PLANS OF RESIDENTIAL PROPERTIES IN THE DEVELOPMENT

發展項目的住宅物業的樓面平面圖

HOUSE 6 洋房 6		
Floor 樓層	The Thickness of floor slabs (excluding plaster) of each house (mm) 每座洋房的樓板 (不包括灰泥) 的厚度 (毫米)	The floor-to-floor height of each house (mm) 每座洋房的層與層之間的高度 (毫米)
G/F 地下	150, 200	2800, 2925, 3100, 3200, 3325, 3500
1/F 一樓	150, 200	2800, 3100, 3400
2/F 二樓	150, 200	2850, 3100, 3400
3/F 三樓	200	3100, 3400
ROOF 天台	200	2350
TOP ROOF 頂層天台	N/A 不適用	N/A 不適用

Alterations to HOUSE 6 have been made by way of minor works or exempted works under the Buildings Ordinance (Cap. 123) after completion of the Development. The approximate locations of the alterations are indicated in the as-built part plans and the alterations are set out below (with the numbering below corresponding to the remarks in the as-built part plan):

(a) New built-in cabinet added and original hose reel relocated.

(b) New built-in cabinet added and original hose reel relocated.

Please refer to the as-built part plans on page 34 and page 35 respectively.

洋房6在發展項目落成後因進行小型工程或獲《建築物條例》(第123章)豁免的工程而有所改動。該等改動之大概位置於實際建造局部平面圖標示，及該等改動列出如下(下述編號對應實際建造局部平面圖中的附註)：

(a) 新增入牆櫃及更改消防喉轆位置。

(b) 新增入牆櫃及更改消防喉轆位置。

請參考第34頁及第35頁之實際建造局部平面圖。

Remarks:

1. The dimensions of floor plans are all structural dimensions in millimetre.
2. There may be architectural features and/or exposed pipes on external walls of some units and houses.
3. Common pipes exposed and/or enclosed in cladding are located at/adjacent to flat roof and/or external wall of some units and houses.
4. There are ceiling bulkheads and/or sunken slab at some units and houses at Living Room, Dining Room, Bedrooms, Bathrooms, Lavatory and/or Kitchen etc. of some units and houses for the air-conditioning system and/or Mechanical and Electrical services.
5. Floor-to-floor height refers to the height between the top surface of the structural slab of a floor and the top surface of the structural slab of its immediate upper floors.
6. The internal areas of the residential properties on the upper floors will generally be slightly larger than those on the lower floors because of the reducing thickness of the structural walls on the upper floors.
7. The ceiling height of some units may vary due to structural, architectural and/or decoration design variations.
8. The indications of fittings such as sinks, bathtubs, toilet bowls and wash basins, etc shown on the floors plans are indications of approximate locations only and not indications of their actual size, design or shapes.
9. Please refer to the reference of the legend shown on the floor plans on page 20 of this sales brochure.

備註：

1. 平面圖所列之數字為以毫米標示之建築結構尺寸。
2. 部分單位及洋房外牆設有建築裝飾及/或外露喉管。
3. 部分單位及洋房的平台及/或外牆處/旁邊設有外露及/或隱藏外牆裝飾板內之公用喉管。
4. 部分單位及洋房客廳、飯廳、睡房、浴室、廁所及/或廚房等有假天花及/或有跌級樓板以內藏冷氣系統及/或機電設備。
5. 層與層之間的高度指該樓層之石屎地台面與上一層石屎地台面之高度距離。
6. 因住宅物業的較高樓層的結構牆的厚度遞減，較高樓層的內部面積，一般比較低樓層的內部面積稍大。
7. 部分單位之天花高度將會因應結構、建築設計及/或裝修設計上的需要有所差異。
8. 樓面平面圖所示之裝置如洗滌盤、浴缸、坐廁及洗面盆等只供展示其大約位置而非展示其實際大小、設計或形狀。
9. 請參閱本售樓說明書第20頁的平面圖上圖例的參考。